

MONTHLY MEMBERSHIP PROGRESS REPORT

District 325 J

Results as of: 3/31/2026

GMT:

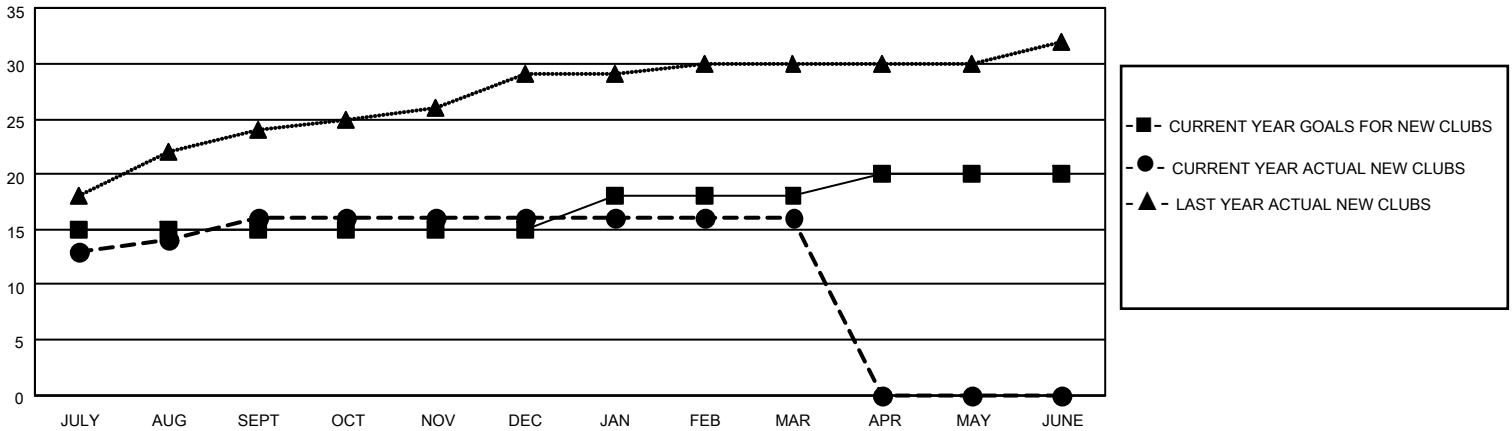
LOCATION NEPAL

GMT CA

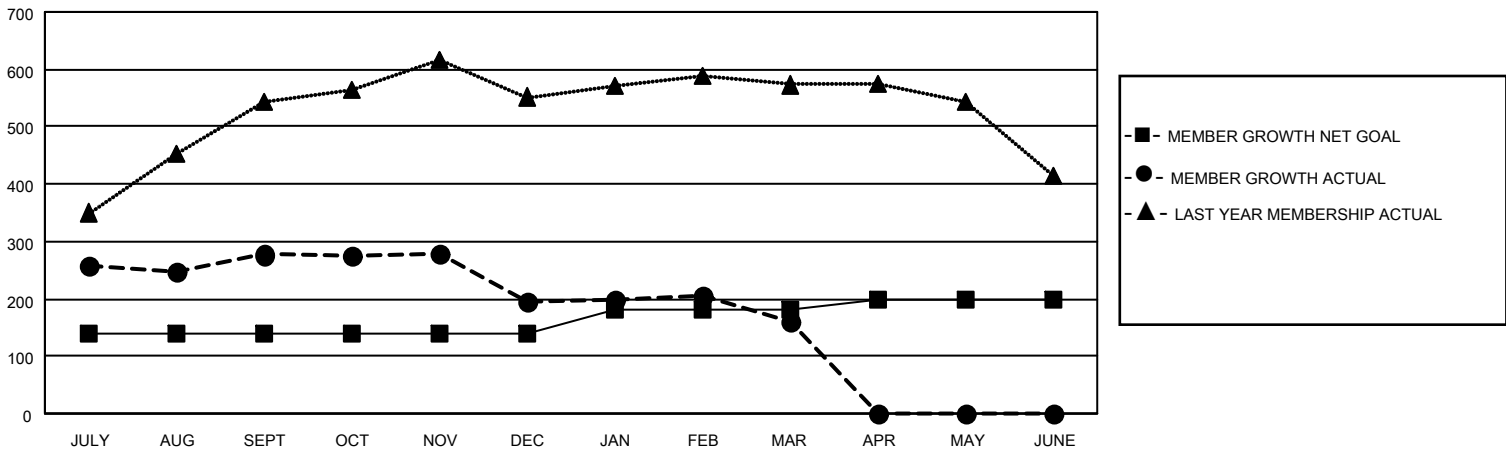
Clubs			
RESULTS FOR 2025-2026			
QUARTER	NEW CLUB GOAL	NEW CLUBS	DROPPED CLUBS
JULY/AUG/SEPT	15	16	4
OCT/NOV/DEC	0	0	0
JAN/FEB/MAR	3	0	0
APR/MAY/JUNE	2	0	0

Members			
RESULTS FOR 2025-2026			
QUARTER	MEMBER GROWTH NET GOAL	MEMBER GROWTH ACTUAL	DROPPED MEMBERS ACTUAL (including transfers)
JULY/AUG/SEPT	140	424	126
OCT/NOV/DEC	0	112	174
JAN/FEB/MAR	40	64	95
APR/MAY/JUNE	20	0	0

GOALS AND ACTUAL NEW CLUBS CUMULATIVE



GOALS AND ACTUAL MEMBERS CUMULATIVE



DROPPED CLUBS: 4

67 CLUBS OF 149 ADDED 1 OR MORE NEW MEMBERS

GENDER DISTRIBUTION

MALE 2,158 (67.73%)
FEMALE 1,026 (32.20%)

DROPPED MEMBERS

DECEASED	0
CLUB CANCELLED	32
OTHER	361
TOTAL	393

[CLICK HERE FOR CUMULATIVE MEMBERSHIP DATA](#)

TOTAL FAMILY UNIT MEMBERS	1,943
FAMILY MEMBERS PAYING HALF DUES	1,303